

---

# YORA HOSE



YORA SOLUTIONS

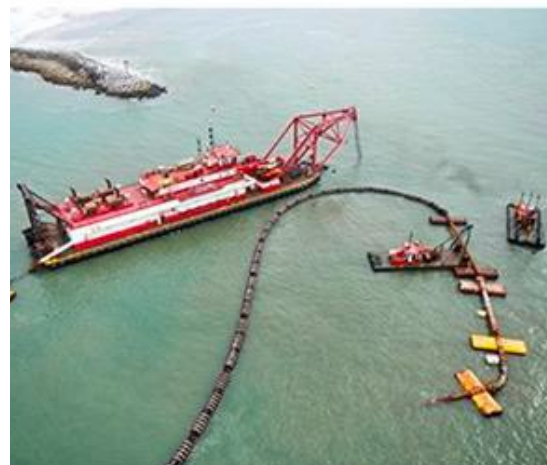
*Marine and O&G Rubber Hoses*

---

# Rubber Hoses



Application



---

# Standard Hoses

## ***1. Suction Hoses***

- Designed for high-flow suction applications.
- Reinforced for vacuum resistance.
- Available with built-in flanges or custom end connections.

## ***2. Discharge Hoses***

- Engineered for smooth material flow with minimal resistance.
- High-quality rubber linings for maximum wear protection.
- Custom lengths and diameters available.

---

# Special Application Hoses

## ***3. Floating Hoses***

- Constructed with buoyant materials for surface applications.
- UV and weather-resistant outer layer.
- Reinforced for high-pressure operations.

## ***4. Armored Hoses***

- Heavy-duty design for extreme abrasion resistance.
- Reinforced with steel rings or wire for added durability.
- Ideal for highly abrasive slurries.



# Standard Discharge

For **standard pressure** delivery of abrasive slurry material, particularly in mineral processing operations.

- **Tube:** super abrasion and tear-resistant rubber in a choice of materials.
- **Length:** up to 10 meters.
- **Ends:** as per customer requirement.
- **Special sizes:** consult Us.



# Suction / Discharge

For **standard pressure** delivery of abrasive slurry material, particularly in mineral processing operations.

- **Tube:** super abrasion and tear-resistant rubber.  
Polyurethane tube available upon request.
- **Length:** up to 10 meters.
- **Ends:** as per customer requirement.
- **Special sizes:** consult Us



---

# Expansion Joints

## *Customization*

Standard expansion joints cover pipe sizes from 50mm to 1500mm. Depending on your application, we can customize with:

- Various liner and cover materials
- Mild steel or stainless steel flanges
- With or without control rods
- Heavily reinforced arches to providing resilience at the hinge point

## *Typical Applications*

- Condenser expansion joints
- Pump connectors
- Vibration control
- Tank connectors



# Industires

---

Power stations

---

Mining

---

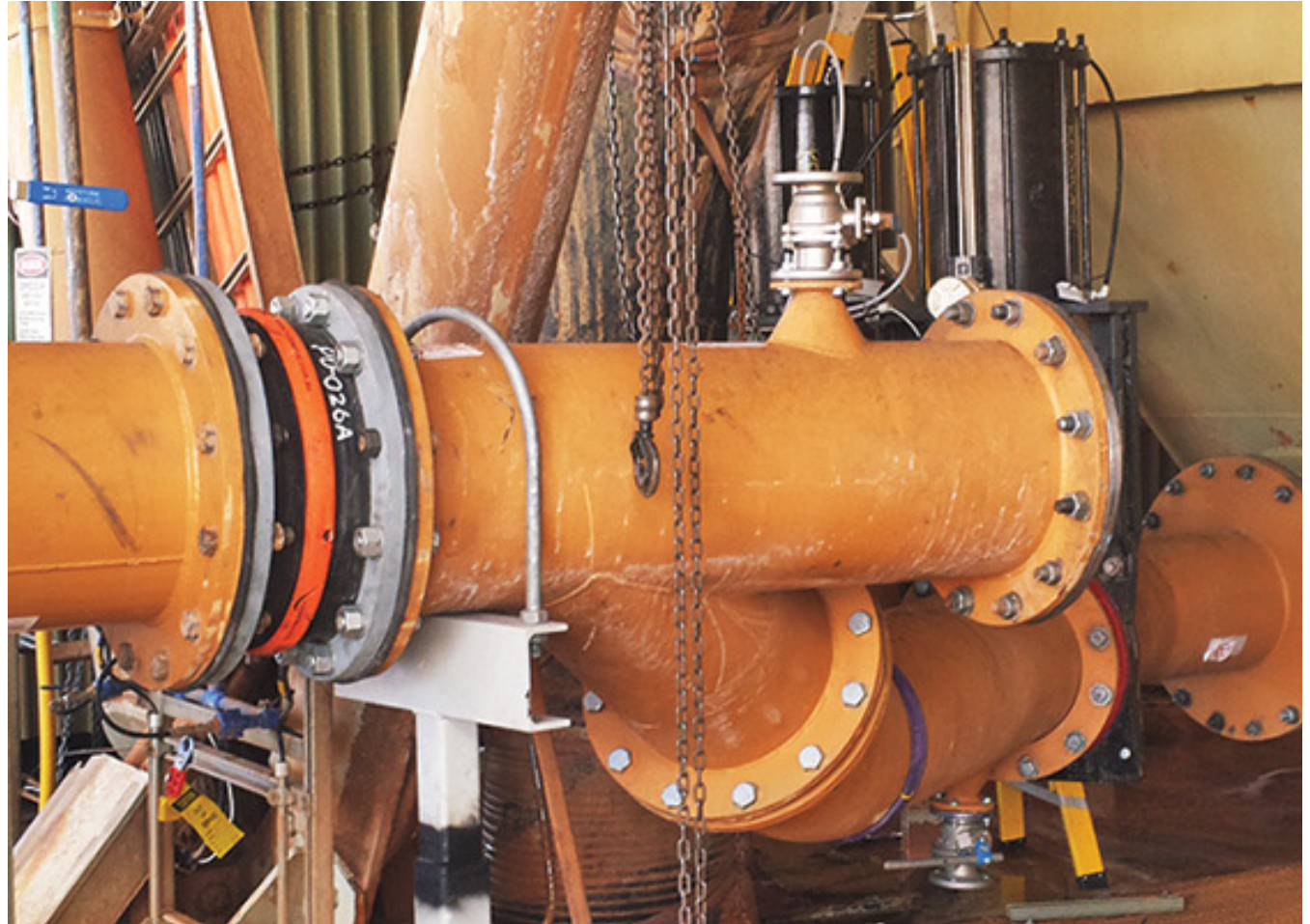
Water treatment

---

Petro chemical

---

Sewage treatment



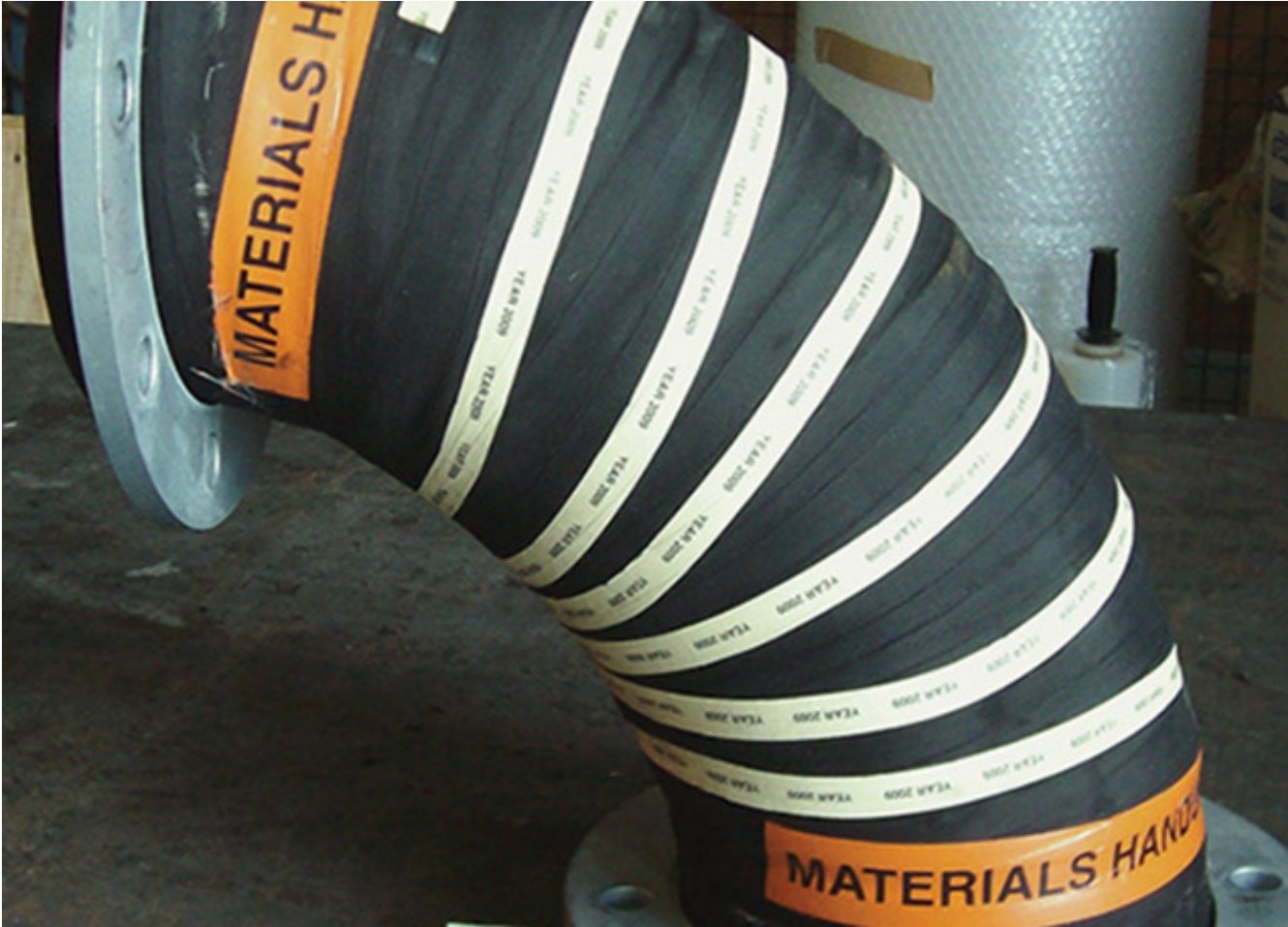


---

# PREFORMED BENDS, REDUCERS AND CUSTOM CONNECTORS

**We can design and Supply a range of preformed bends and custom connectors to suit various material handling and rubber mining hose applications.**

- This includes instances where the hose would have exceeded the designed bend radius or where rubber-lined steel pipe wear prematurely in abrasive applications.
- Preformed bends are formed on specially manufactured mandrels in the same way as our premium quality hoses, and can incorporate the same features as straight hoses.

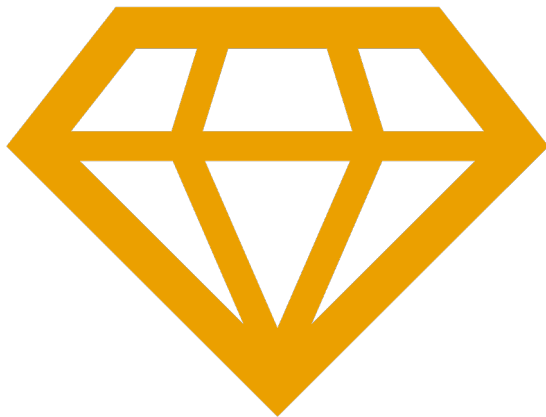


## Customization Options

- Reducers
- Special fittings
- Branches
- Offtakes
- Wear indicator systems

---

## Key Features & Benefits:



---

Customizable – Tailored to meet project-specific needs.

---

Durable & Reliable – Built to withstand harsh conditions.

---

High Wear Resistance – Premium rubber compounds for extended service life.

---

Wide Application – Suitable for dredging, mining, and marine industries. Comprehensive Support – Expert engineering and technical support.

---

# Industries we serve

- *Dredging & Marine Operations*
- *Mining & Mineral Processing*
- *Port & Harbor Maintenance*
- *Land Reclamation Projects*





---

# Ship to Ship STS

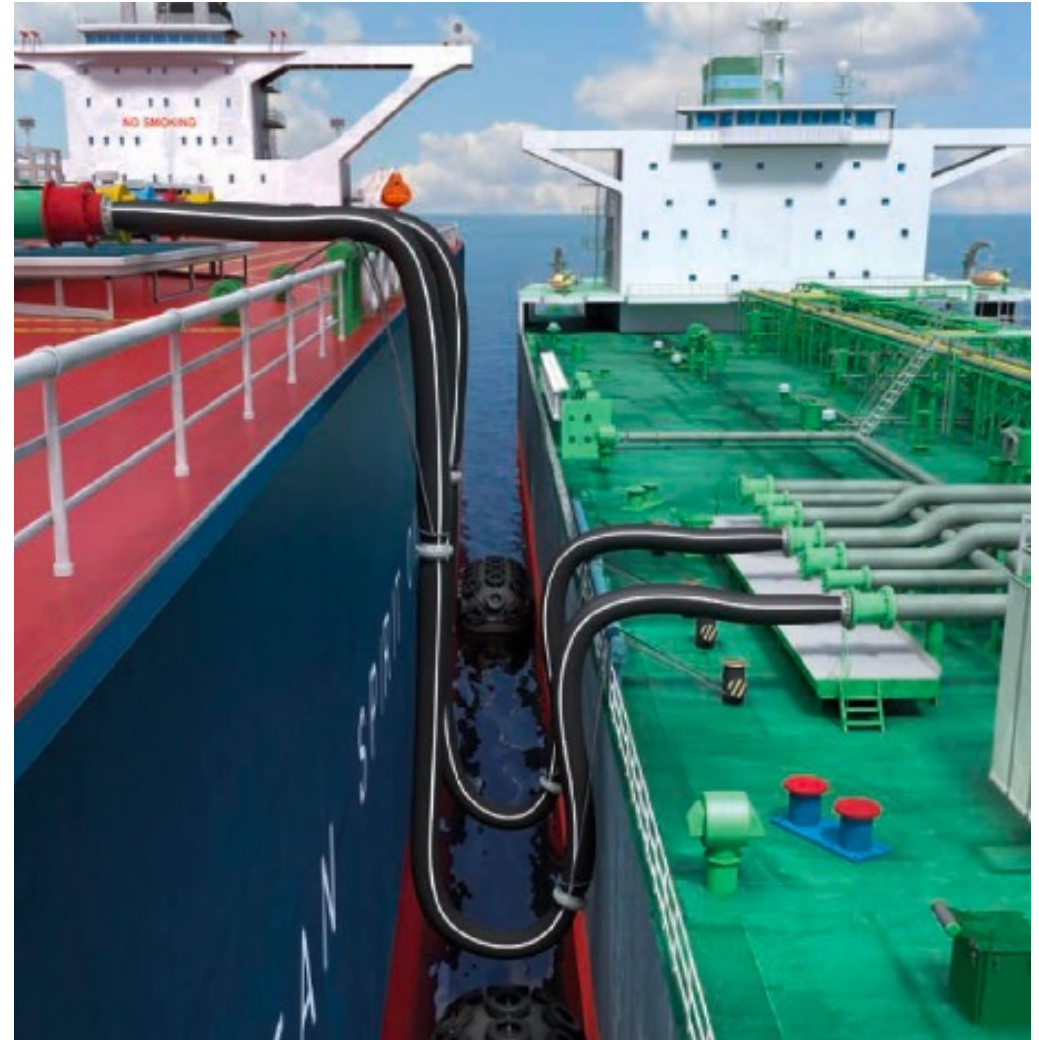


***CARGO TRANSFER SYSTEM***

---

# STS (Ship-to-Ship)

- A Ship to Ship (STS) transfer is a transfer between two vessels moored alongside each other, which is typically carried out with both vessels stationary. STS transfers can also be carried out with both vessels underway, especially in the case of military naval vessels. STS transfers are also used for cargo lightering purposes, when a laden tanker is required to reduce its draft by offloading cargo when entering into and navigating shallow waters.



---

# Hose Design



- Hose design for dock service operations with increased flexibility and lower weight, suitable for discharge applications only.
- Single and double carcass with metallic or textile reinforcement. Hose ID: from 6" to 12"
- Rated working pressure: 15 bar.



# Pipe Repair Bandage







---

## Water Activated Instant Repair

- Bandage primarily used for emergency repairs on pipes.
- Made from fiberglass saturated with water activated polyurethane. They have high strength and elasticity.
- Creates a rigid structure with high ability of anti-bending, anti-elongation and are chemical resistant.
- Used as emergency repairs and protection of pipelines.
- Bond to rubber, PVC, polyester, metal, fiberglass and concrete.

# Applications

Part No.	Description	Qty / Box
WTB3.6-125	125 mm x 3.6 m WrapTech Bandage	10
WTB10-125	125 mm x 10 m WrapTech Bandage	10
Each bandage is packaged with a pair of latex gloves, steel putty and a datasheet		



Mining (Coal, Gold, Iron Ore, etc.)

Processing plants – Water / Slurry lines and process equipment



Oil and Gas

Oil / Gas / Water supply lines and process equipment



Water and Waste

Supply and transfer lines



Power Generation

Cooling water, ash transfer and process lines



Pulp and Paper

Supply and transfer lines



Sugar Mills

Supply and transfer lines



Process Industries

Supply lines and equipment

---

# Hose Fittings



---

# Camlok

- *Camlock coupling is an excellent choice for applications in low pressure fluid handling. These cam locks, also known as aluminum cam and groove couplings are stocked in sizes 1/2" up to 6", with special sizes like the 8" obtainable by request. Our camlocks are compatible with camlock fittings and couplings.*





# Range of Fittings



PP / Nylon



Stainless Steel



Brass



Aluminium



# Camlock Fittings Chart





**Type A**  
Male Camlock to  
Female Threads



**Type F**  
Male Camlock to  
Male Threads



**Type E**  
Male Camlock to  
Hose Shank



**Type DP**  
Camlock Dust Plug



**Type B**  
Female Camlock to  
Male Threads



**Type D**  
Female Camlock to  
Female Threads



**Type C**  
Female Camlock to  
Hose Shank



**Type DC**  
Camlock Dust Cap



**Type DA Jump**  
Female Camlock to  
Male Camlock



**Type AA Spool Adapter**  
Double Male Camlock



**Type DD Coupler**  
Double Female Camlock



Camlock Elbow

# Camlok Fittings Chart

# Applications

*Chemical, pharmaceuticals, agriculture, and other water, oil, steam, dust, etc. The hose clamp is tightly locked, tight and has a wide adjustment range. It is suitable for fasteners with soft and hard pipe connections. For further information or products details,*

European type hose clamp

SIZE,MM	W1 thickness* band width	W2/W4 band width	Screw	SIZE,MM	W1 thickness* band width	W2/W4 band width	Screw
17-19	0.6*1.8	0.6*1.8	M5	86-91	1.5*24	0.8*24	M8
20-22				92-97			
23-25				98-103			
26-28				104-112			
29-31	0.8*20	0.6*20	M6	113-121	1.7*26	1.0*26	M10
32-35				122-130			
36-39				131-139			
40-43				140-148			
44-47	1.2*22	0.6*22	M8	149-161	1.5*24	0.8*24	M8
48-51				162-174			
52-55				175-187			
56-59				188-200			
60-63	1.5*24	0.8*24	M8	201-213	1.7*26	1.0*26	M10
64-67				214-226			
68-73				227-239			
74-79				240-252			
80-85							



American type hose clamp

SIZE,mm	Band width,mm	SIZE,mm	Band width,mm
6-10	8	33-57	12.7
8-12		40-63	
10-16		46-70	
12-20		52-78	
16-25		59-82	
14-27		65-89	
18-32		72-95	
10-20	12.7	78-101	
10-22		84-108	
11-25		91-114	
14-27		105-127	
18-32		118-140	
21-38		130-152	
21-44		143-165	
27-51		155-178	



# Clamps

Germany type hose clamp

SIZE,mm	Band width,mm	SIZE,mm	Band width,mm
5-12	8/12	100-130	9/12
10-15		130-140	
12-19		120-140	
14-15		130-150	
16-20		140-160	
20-30		150-170	
25-40		160-180	
32-50		170-190	
40-60		180-200	
50-70		190-210	
60-80		200-230	
70-90		220-240	
80-100		230-250	



Double wire hose clamp

SIZE	Clamp Range		SIZE	Clamp Range	
	(min)	(max)		(min)	(max)
5-12	20	22	50-75	100	125
5-15	21	23	50-100	104	128
5-24	26	34	50-100	130	144
5-40	32	40	50-175	151	180
5-45	39	49	50-180	180	190
5-60	40	60	50-210	190	200
5-76	60	76	50-275	208	225
5-94	76	94	50-300	225	230
5-125	96	125	50-315	250	260
5-150	88	96	50-325	300	330
5-150	96	103			



Double wire Hose Clamp

SIZE	Screw Length	SIZE	Screw Length
4-6	M4X20	50-55	M4X30
6-9	M4X20	55-60	M4X20
9-12	M4X20	60-65	M4X20
12-15	M4X20	65-70	M4X20
15-18	M4X20	70-80	M4X20
18-21	M4X20	80-90	M4X20
21-24	M4X30	90-100	M4X30
24-27	M4X30	100-110	M4X30
27-30	M4X30	110-120	M4X30
30-36	M4X30	120-130	M4X30
36-40	M4X30	130-140	M4X30
40-45	M4X30	140-150	M4X30
45-51	M4X30	150-160	M4X30





# Storz/Bauer coupling



Bauer Coupling

Size
2"
3"
4"
6"
8"
10"
12"



Pin Lug Coupling

Size
1"
1-1/4"
1-1/2"
2"
2-1/2"
3"
4"



Japanese Hose Coupling

Size
25
32
40
50
65
80
100



Gost couplings

Size
DN 50
DN 65
DN 80
DN 100
DN 125



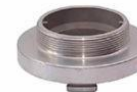
STORZ

1"
1-1/2"
2"
2-1/2"
3"
4"
5"
6"



Female

1"
1-1/2"
2"
2-1/2"
3"
4"
5"
6"



Male

1"
1-1/2"
2"
2-1/2"
3"
4"
5"
6"



Blank Cap With Chain

1"
1-1/2"
2"
2-1/2"
3"
4"
5"
6"

---

**Please submit  
your inquiry today.**



*YORA SOLUTIONS – FZCO*

*101, Building A1, Dubai Digital Park,  
Dubai Silicon Oasis, Dubai, United Arab  
Emirates*

[Sales@yora-solutions.com](mailto:Sales@yora-solutions.com)

**+971 50 233 8486**