
Rubber Hoses

Marine and O&G Rubber Hoses

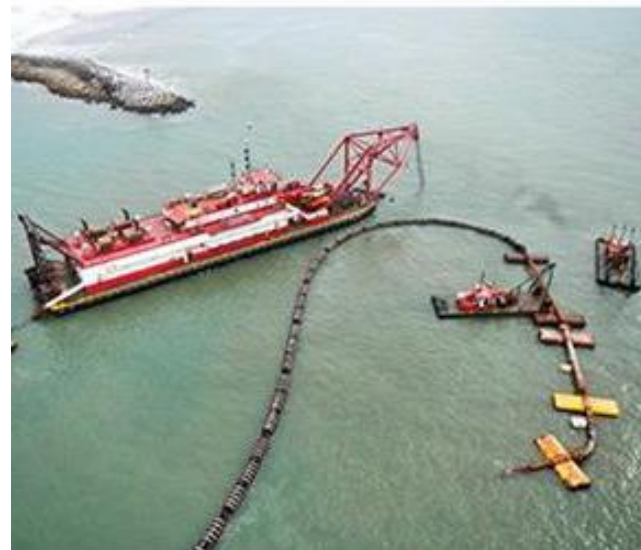


Rubber Hoses



RUBBERTEC
engineered mining solutions

Application



Exclusive Partnership: Rubbertec Australia

- **Rubbertec Australia** is a premier engineering and manufacturing company specializing in high-performance rubber solutions for demanding industrial environments. With a strong legacy in chemical and abrasion resistance, their expertise includes:
 - **Hand-built mining hoses**
 - **Rubber-lined expansion joints**
 - **Custom-engineered solutions for oil & gas, food, Marine, and aviation sectors**
- Operating from five strategic locations across Australia, Rubbertec delivers **end-to-end project capabilities** — from design to completion — for both one-off custom jobs and large-scale national operations.
- As the **exclusive agent in the region**, **YORA Solutions FZCO** proudly represents Rubbertec's advanced product range, bringing world-class Australian engineering to critical infrastructure and marine projects across the Middle East and beyond.

Standard Hoses

1. Suction Hoses

- Designed for high-flow suction applications.
- Reinforced for vacuum resistance.
- Available with built-in flanges or custom end connections.

2. Discharge Hoses

- Engineered for smooth material flow with minimal resistance.
- High-quality rubber linings for maximum wear protection.
- Custom lengths and diameters available.

Special Application Hoses

3. Floating Hoses

- Constructed with buoyant materials for surface applications.
- UV and weather-resistant outer layer.
- Reinforced for high-pressure operations.

4. Armored Hoses

- Heavy-duty design for extreme abrasion resistance.
- Reinforced with steel rings or wire for added durability.
- Ideal for highly abrasive slurries.

Standard Discharge

For **standard pressure** delivery of abrasive slurry material, particularly in mineral processing operations.

- **Tube:** super abrasion and tear-resistant rubber in a choice of materials.
- **Length:** up to 10 meters.
- **Ends:** as per customer requirement.
- **Special sizes:** consult Us.



Suction / Discharge

For **standard pressure** delivery of abrasive slurry material, particularly in mineral processing operations.

- **Tube:** super abrasion and tear-resistant rubber.
Polyurethane tube available upon request.
- **Length:** up to 10 meters.
- **Ends:** as per customer requirement.
- **Special sizes:** consult Us



Expansion Joints

Customization

Standard expansion joints cover pipe sizes from 50mm to 1500mm. Depending on your application, we can customize with:

- Various liner and cover materials
- Mild steel or stainless steel flanges
- With or without control rods
- Heavily reinforced arches to providing resilience at the hinge point

Typical Applications

- Condenser expansion joints
- Pump connectors
- Vibration control
- Tank connectors

Industries

Power stations

Mining

Water treatment

Petro chemical

Sewage treatment



PREFORMED BENDS, REDUCERS AND CUSTOM CONNECTORS

We can design and Supply a range of preformed bends and custom connectors to suit various material handling and rubber mining hose applications.

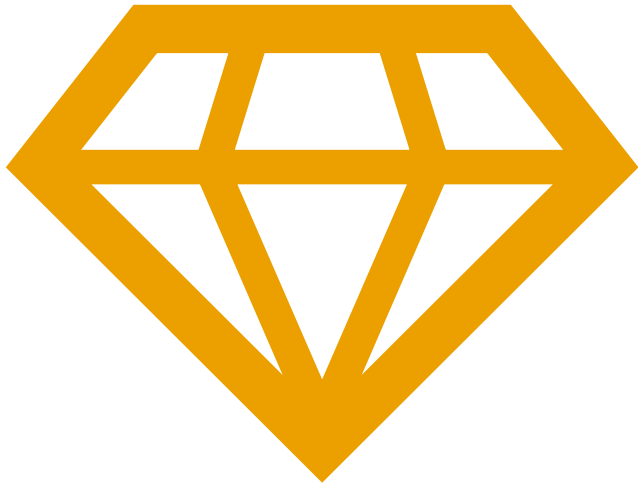
- This includes instances where the hose would have exceeded the designed bend radius or where rubber-lined steel pipe wear prematurely in abrasive applications.
- Preformed bends are formed on specially manufactured mandrels in the same way as our premium quality hoses, and can incorporate the same features as straight hoses.



Customization Options

- Reducers
- Special fittings
- Branches
- Offtakes
- Wear indicator systems

Key Features & Benefits:



Customizable – Tailored to meet project-specific needs.

Durable & Reliable – Built to withstand harsh conditions.

High Wear Resistance – Premium rubber compounds for extended service life.

Wide Application – Suitable for dredging, mining, and marine industries. Comprehensive Support – Expert engineering and technical support.

Industries we serve

- *Dredging & Marine Operations*
- *Mining & Mineral Processing*
- *Port & Harbor Maintenance*
- *Land Reclamation Projects*



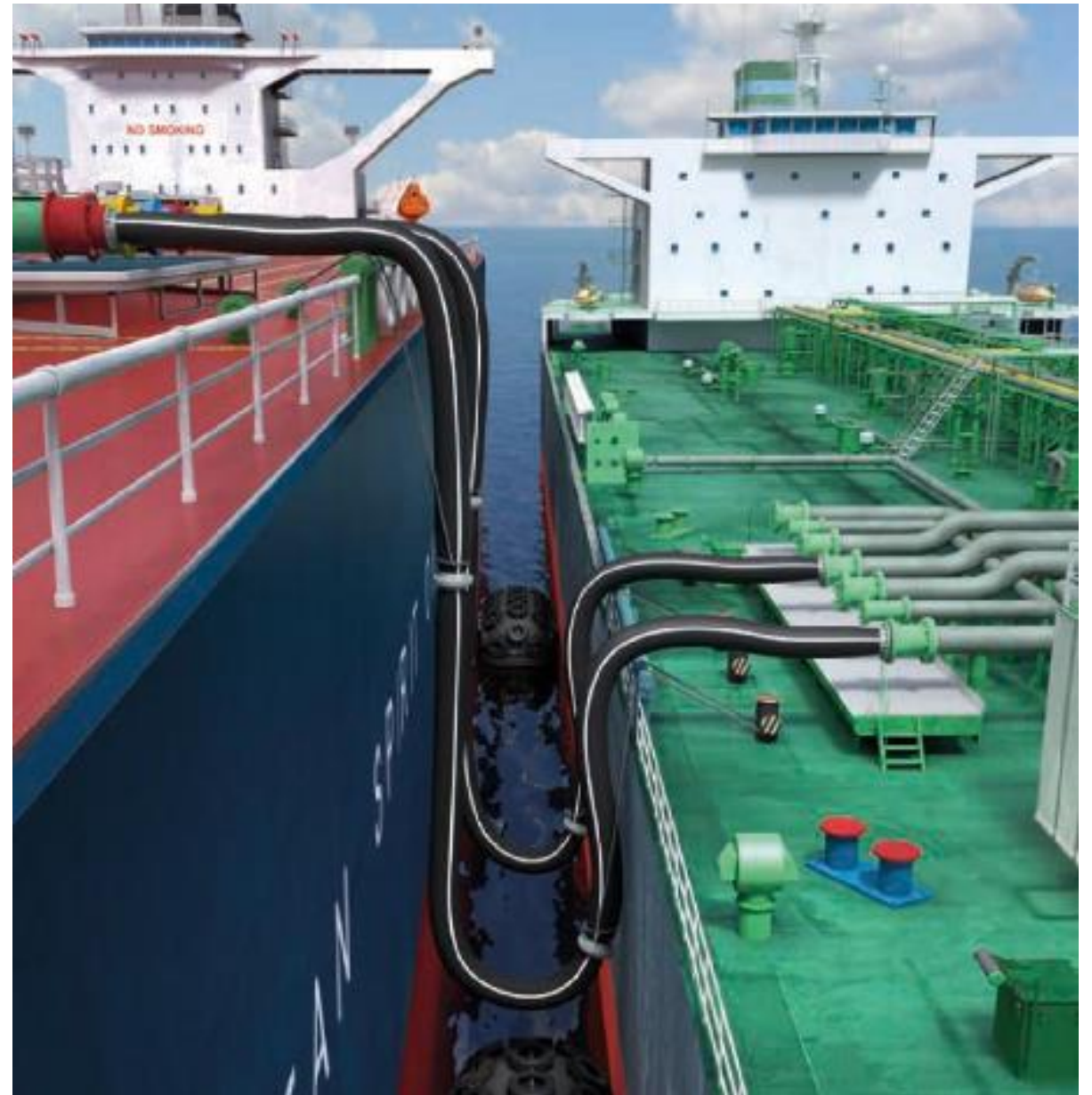
Ship to Ship STS



CARGO TRANSFER SYSTEM

STS (Ship-to-Ship)

- *A Ship to Ship (STS) transfer is a transfer between two vessels moored alongside each other, which is typically carried out with both vessels stationary. STS transfers can also be carried out with both vessels underway, especially in the case of military naval vessels. STS transfers are also used for cargo lightering purposes, when a laden tanker is required to reduce its draft by offloading cargo when entering into and navigating shallow waters.*



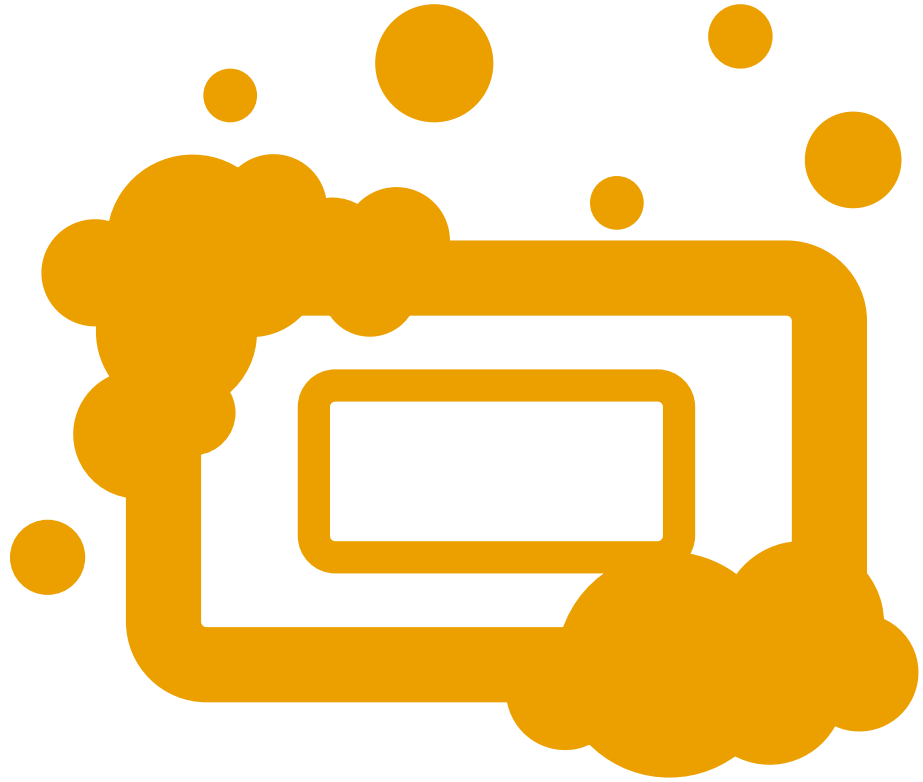
Hose Design



- Hose design for dock service operations with increased flexibility and lower weight, suitable for discharge applications only.
- Single and double carcass with metallic or textile reinforcement. Hose ID: from 6” to 12”
- Rated working pressure: 15 bar.

Pipe Repair Bandage





Water Activated Instant Repair

- Bandage primarily used for emergency repairs on pipes.
- Made from fiberglass saturated with water activated polyurethane. They have high strength and elasticity.
- Creates a rigid structure with high ability of anti-bending, anti-elongation and are chemical resistant.
- Used as emergency repairs and protection of pipelines.
- Bond to rubber, PVC, polyester, metal, fiberglass and concrete.

Applications

| Part No. | Description | Qty / Box |
|---|---------------------------------|-----------|
| WTB3.6-125 | 125 mm x 3.6 m WrapTech Bandage | 10 |
| WTB10-125 | 125 mm x 10 m WrapTech Bandage | 10 |
| Each bandage is packaged with a pair of latex gloves, steel putty and a datasheet | | |



Mining (Coal, Gold, Iron Ore, etc.)

Processing plants – Water / Slurry lines and process equipment



Oil and Gas

Oil / Gas / Water supply lines and process equipment



Water and Waste

Supply and transfer lines



Power Generation

Cooling water, ash transfer and process lines



Pulp and Paper

Supply and transfer lines



Sugar Mills

Supply and transfer lines



Process Industries

Supply lines and equipment

Hose Fittings



Camlok

- *Camlock coupling is an excellent choice for applications in low pressure fluid handling. These cam locks, also known as aluminum cam and groove couplings are stocked in sizes 1/2" up to 6", with special sizes like the 8" obtainable by request. Our camlocks are compatible with camlock fittings and couplings.*



Range of Fittings



PP / Nylon



Stainless Steel



Brass



Aluminium



Camlock Fittings Chart



Type A
Male Camlock to
Female Threads



Type F
Male Camlock to
Male Threads



Type E
Male Camlock to
Hose Shank



Type DP
Camlock Dust Plug



Type B
Female Camlock to
Male Threads



Type D
Female Camlock to
Female Threads



Type C
Female Camlock to
Hose Shank



Type DC
Camlock Dust Cap



Type DA Jump
Female Camlock to
Male Camlock



Type AA Spool Adapter
Double Male Camlock



Type DD Coupler
Double Female Camlock



Camlock Elbow

Camlok Fittings Chart

Applications

Chemical, pharmaceuticals, agriculture, and other water, oil, steam, dust, etc. The hose clamp is tightly locked, tight and has a wide adjustment range. It is suitable for fasteners with soft and hard pipe connections. For further information or products details,

European type hose clamp

| SIZE,MM | W1 thickness* band width | W2/W4 | Screw | SIZE,MM | W1 thickness* band width | W2/W4 | Screw |
|---------|-----------------------------|---------|-------|---------|-----------------------------|--------|-------|
| 17-19 | 0.6*1.8 | 0.6*1.8 | M5 | 86-91 | 1.5*24 | 0.8*24 | M8 |
| 20-22 | | | | 92-97 | | | |
| 23-25 | | | | 98-103 | | | |
| 26-28 | | | | 104-112 | | | |
| 29-31 | 0.8*20 | 0.6*20 | M6 | 113-121 | 1.7*26 | 1.0*26 | M10 |
| 32-35 | | | | 122-130 | | | |
| 36-39 | | | | 131-139 | | | |
| 40-43 | | | | 140-148 | | | |
| 44-47 | 1.2*22 | 0.6*22 | M6 | 149-161 | | | |
| 48-51 | | | | 162-174 | | | |
| 52-55 | | | | 175-187 | | | |
| 56-59 | | | | 188-200 | | | |
| 60-63 | 1.5*24 | 0.8*24 | M8 | 201-213 | | | |
| 64-67 | | | | 214-226 | | | |
| 68-73 | | | | 227-239 | | | |
| 74-79 | | | | 240-252 | | | |
| 80-85 | | | | | | | |



American type hose clamp

| SIZE,mm | Band width,mm | SIZE,mm | Band width,mm |
|---------|---------------|---------|---------------|
| 6-10 | 8 | 33-57 | 12.7 |
| 8-12 | | 40-63 | |
| 10-16 | | 46-70 | |
| 12-20 | | 52-78 | |
| 16-25 | | 59-82 | |
| 14-27 | | 65-89 | |
| 18-32 | | 72-95 | |
| 10-20 | 12.7 | 78-101 | |
| 10-22 | | 84-108 | |
| 11-25 | | 91-114 | |
| 14-27 | | 105-127 | |
| 18-32 | | 118-140 | |
| 21-38 | | 130-152 | |
| 21-44 | | 143-165 | |
| 27-51 | | 155-178 | |



Clamps

Germany type hose clamp

| SIZE,mm | Band width,mm | SIZE,mm | Band width,mm |
|---------|---------------|---------|---------------|
| 6-12 | 6-12 | 109-130 | 90-110 |
| 10-16 | | 130-130 | |
| 17-19 | | 130-140 | |
| 16-25 | | 150-150 | |
| 20-32 | | 140-160 | |
| 25-40 | | 150-170 | |
| 32-50 | | 160-180 | |
| 40-60 | | 170-190 | |
| 50-75 | | 180-200 | |
| 60-80 | | 190-210 | |
| 70-90 | | 200-220 | |
| 80-100 | | 210-230 | |
| 90-110 | | 220-250 | |



1.CUTTING

2.PNEUMATIC
BENDING

3.WELDING

4.BENDING



7.RIVETING

6.ASSEMBLY

5.ROUNDING

Double wire hose clamp

| SIZE | Clamp Range | | SIZE | Clamp Range | |
|--------|-------------|-------|---------|-------------|-------|
| | (min) | (max) | | (min) | (max) |
| SL-02 | 20 | 22 | SL-025 | 105 | 125 |
| SL-06 | 22 | 24 | SL-050 | 104 | 124 |
| SL-04 | 28 | 34 | SL-060 | 130 | 144 |
| SL-08 | 32 | 40 | SL-075 | 151 | 165 |
| SL-08 | 38 | 48 | SL-100 | 180 | 190 |
| SL-08 | 40 | 60 | SL-018 | 180 | 200 |
| SL-16 | 60 | 76 | SL-075 | 208 | 225 |
| SL-04 | 70 | 94 | SL-088 | 220 | 230 |
| SL-100 | 84 | 115 | SL-0125 | 251 | 260 |
| SL-020 | 88 | 96 | SL-1275 | 300 | 330 |
| SL-060 | 96 | 103 | | | |



Double-wire Hose Clamp

| SIZE | Screw Length | SIZE | Screw Length |
|-------|--------------|---------|--------------|
| 4-6 | M4X20 | 50-55 | M4X30 |
| 6-9 | M4X20 | 55-60 | M4X30 |
| 9-12 | M4X20 | 60-65 | M4X30 |
| 13-15 | M4X20 | 65-70 | M4X30 |
| 15-18 | M4X20 | 70-80 | M4X30 |
| 18-21 | M4X20 | 80-90 | M4X30 |
| 21-24 | M4X30 | 90-100 | M4X30 |
| 24-27 | M4X30 | 100-110 | M4X35 |
| 27-30 | M4X30 | 110-120 | M4X35 |
| 30-36 | M4X30 | 120-130 | M4X35 |
| 36-40 | M4X30 | 130-140 | M4X35 |
| 40-45 | M4X30 | 140-150 | M4X35 |
| 46-51 | M4X30 | 150-160 | M4X35 |



Storz/Bauer coupling



Bauer Coupling

| Size |
|------|
| 2" |
| 3" |
| 4" |
| 6" |
| 8" |
| 10" |
| 12" |



Pin Lug Coupling

| Size |
|--------|
| 1" |
| 1-1/4" |
| 1-1/2" |
| 2" |
| 2-1/2" |
| 3" |
| 4" |



Japanese Hose Coupling

| Size |
|------|
| 25 |
| 32 |
| 40 |
| 50 |
| 65 |
| 80 |
| 100 |



Gost couplings

| Size |
|--------|
| DN 50 |
| DN 65 |
| DN 80 |
| DN 100 |
| DN 125 |



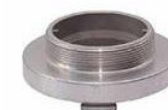
STORZ

| |
|--------|
| 1" |
| 1-1/2" |
| 2" |
| 2-1/2" |
| 3" |
| 4" |
| 5" |
| 6" |



Female

| |
|--------|
| 1" |
| 1-1/2" |
| 2" |
| 2-1/2" |
| 3" |
| 4" |
| 5" |
| 6" |



Male

| |
|--------|
| 1" |
| 1-1/2" |
| 2" |
| 2-1/2" |
| 3" |
| 4" |
| 5" |
| 6" |



Blank Cap With Chain

| |
|--------|
| 1" |
| 1-1/2" |
| 2" |
| 2-1/2" |
| 3" |
| 4" |
| 5" |
| 6" |

**Please submit
your inquiry today.**

RUBBERTEC
engineered mining solutions



200B, IFZA DDP A2

Dubai Silicon Oasis,

Dubai, United Arab Emirates

- Sales@yora-solutions.com
- +971 50 233 8486